

www.dnavision.be

DNAVISION sa
Rue Adrienne Bolland 8
B-6041 Charleroi - Belgium
Tel : +32 (0)71 37 85.27
Fax : +32 (0)71 37 85.01
info@dnavision.be



DNA^{sa}**VISION**

YOUR GENETIC SOLUTION

Pharmacogenetics | Pharmacogenomics

Human Genetics | Biosafety

*Genetic Identification | **Food Quality***

Bio Banking | Other Services





DNAVISION sa
Rue Adrienne Bolland 8
B-6041 Charleroi - Belgium
Tel : +32 (0)71 37 85.27
Fax : +32 (0)71 37 85.01
info@dnavigation.be
www.dnavigon.be

Food traceability



APPLICATION NOTE

INTRODUCTION

DNAVision does research into the traceability and genetic authentication of raw materials and processed foods. Our genetic characterisations are done on different matrices such as basic materials (seeds, leaves, hair, feathers, etc), processed or finished products (flour, bread, meat products, etc.), in solid, liquid or viscous form.

As well as qualitative analysis, the laboratory develops analytical methods to quantify contaminants and genetically modified organisms.

GENETIC TRACEABILITY

Eating habits of consumers can depend on organoleptic, dietetic, religious or health factors. When choosing meat, for example, some prefer beef, others choose pork or poultry.

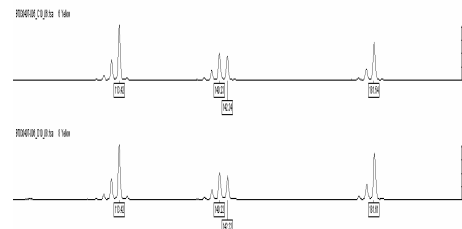
So as not to lose consumer confidence, supermarkets have opted for a food safety policy which includes transparent, unambiguous labelling of products. Supermarkets therefore have to inspect their suppliers.

CUSTOMISED R&D

Our expertise in evolutionary genetics, bioinformatics and the construction of DNA biomarker banks allows us to provide you with customised research into routine genetic testing for the identification, of any living individuals species, from bacteria to animals.

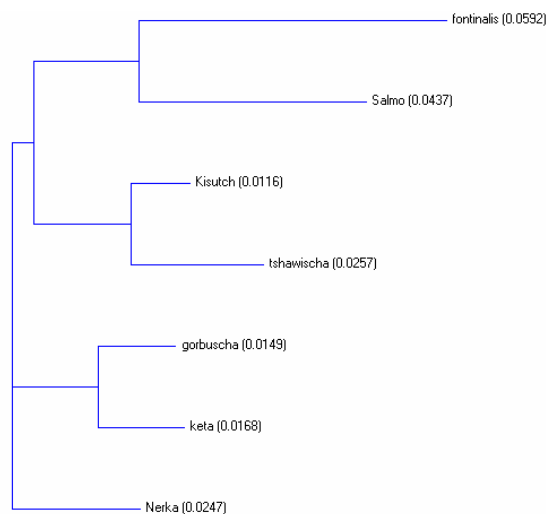
EXAMPLES OF VALIDATED TESTS

- Specific nuclear markers are used to track beef samples;



-Mitochondrial markers are routinely used to recognise salmon species ;

	15643	15650	15660	15670	15680	15690	15700	15710
fontinalis	15659	AACGGACATCTTTCCTTTATC	TTTATATG	ATCGCCCGGAGACTTAC	TCACCGCCGAT			
Salmo	15659	AACGGACATCTTTCCTTTATC	TTTATATG	ATCGCCCGGAGACTTAC	TCACCGCCGAT			
Kisutch	281	AACGGACATCTTTCCTTTATC	TTTATATG	ATCGCCCGGAGACTTAC	TCACCGCCGAT			
tshawischa	255	AACGGACATCTTTCCTTTATC	TTTATATG	ATCGCCCGGAGACTTAC	TCACCGCCGAT			
gorbuscha	281	AACGGACATCTTTCCTTTATC	TTTATATG	ATCGCCCGGAGACTTAC	TCACCGCCGAT			
keta	286	AACGGACATCTTTCCTTTATC	TTTATATG	ATCGCCCGGAGACTTAC	TCACCGCCGAT			
Nerka	282	AACGGACATCTTTCCTTTATC	TTTATATG	ATCGCCCGGAGACTTAC	TCACCGCCGAT			



- Identification of wheat cultivars with DNA microsatellite markers in raw and processed foodstuffs (e.g, bread, moulds, etc.)